

Skeletal Biology of Earlier Human Populations

ANTHROPOLOGY 4R03

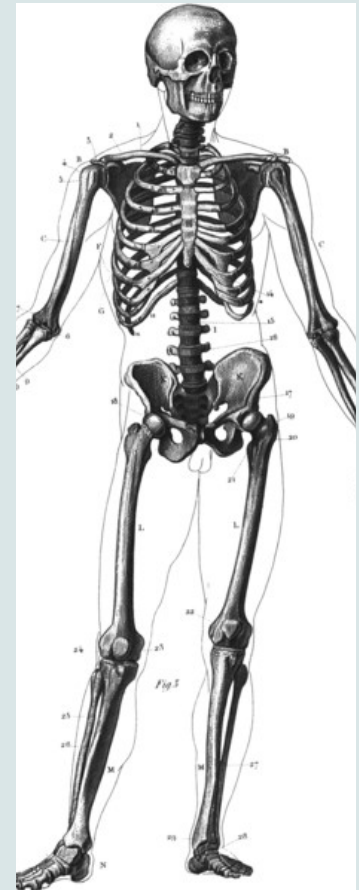
This course is designed for students interested in skeletal biology and the analysis of human skeletal and dental remains. We will discuss the nature of skeletal samples, the information we can gain from the human skeleton, and some of the limitations of skeletal analysis. We will then investigate the methods used in the study of skeletal and dental remains, and critically evaluate the strengths and limitations of these methods. It is expected that students will have previous training in osteology or skeletal anatomy, but this course is not necessarily limited to those pursuing advanced degrees in biological anthropology. This course is designed to develop skills in research, skeletal analysis, and written communication that are relevant in both academic and professional settings.

There are weekly readings from both required texts, and students are expected to come to class prepared to discuss the week's readings and apply them during class. The course is a blend of lecture and seminar formats, and there will be practical laboratory sessions that form part of the learning experience.

REQUIRED TEXTS

Sofaer, J. 2006. *The Body as Material Culture: A Theoretical Osteoarchaeology*. Cambridge: Cambridge University Press.

Agarwal, S. and Glencross, B. 2011. *Social Bioarchaeology*. Chichester: Wiley-Blackwell.



CLASS SCHEDULE:

Tuesdays - 11:30am to 2:20pm

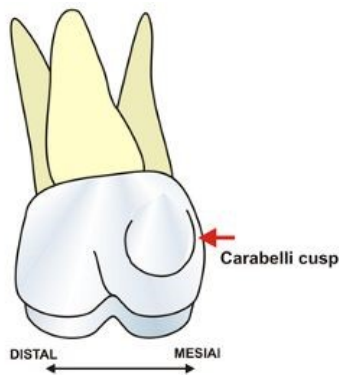
Location: CNH 407

INSTRUCTOR:

- Dr. T. Prowse
- Office: CNH 514
- Office Hours: Mondays 1-3 pm
- Email: prowset@mcmaster.ca

LAB TECHNICIAN:

Bonnie Kahlon



COURSE GOALS

By the end of this course you will be able to:

- Discuss and evaluate techniques used to investigate the skeletal biology of past populations
- Communicate new bioarchaeological research and methods to a broad (public) audience
- Develop an independent research project, and present the results of the analysis to your peers in a poster conference at the end of the term.
- Identify major themes in bioarchaeological research

“The goal.... is to transcend the skeletal body into the realm of lived experience and to make a significant contribution to our understanding of social processes and life in the past” (Agarwal and Glencross, 2011:3).

SPECIAL ACCOMMODATIONS

Students with specific learning accommodations should contact Dr. Prowse by the end of the **2nd week** of term. You must have written confirmation from Student Accessibility Services (formerly the Center for Student Development).

<http://sas.mcmaster.ca/>

If you require any of this information in an alternate/accessible format, please contact Eszter Bell at 905-525-9140, extension 24423, or email:

bellesz@mcmaster.ca

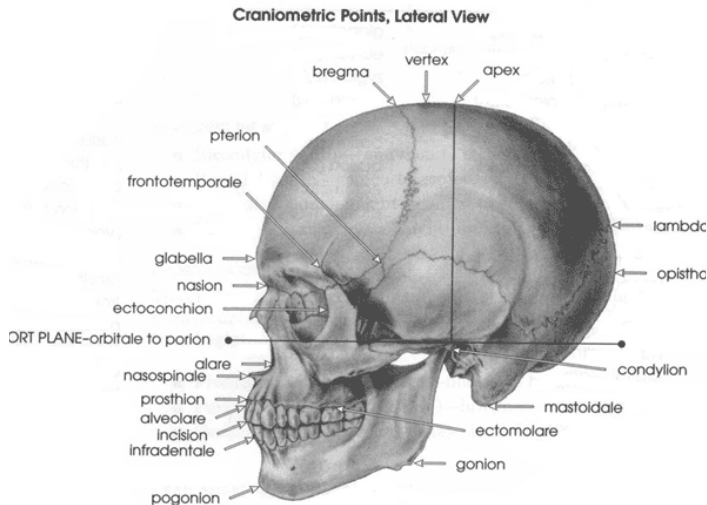
COURSE EVALUATIONS

Weekly Response Papers (9 x 3% = 27%) - These are short (~1-1.5 page, single-spaced) synthetic **discussions** of the weekly assigned readings. These are not just **summaries**, but rather are thoughtful analyses of what you have read. Full credit will only be given if the written summary refers to **all** weekly readings **and** includes some independent critique or synthesis. These will be posted on A2L the night **before** the Tuesday class (Monday by 11pm).

Annotated Bibliography (28%) - You will choose a topic based on the assigned readings and do further research on that topic. You will be required to identify 10 relevant articles or book chapters, provide a brief summary of each, and discuss how that article contributes to our current understanding of that topic.

Research Project (45%) - This is an opportunity for you to conduct hands-on, original research using techniques discussed in class. There are 3 parts:

- 1) **Research proposal** (10%) -Your proposal should include a title, a brief description about the research you will conduct, your methodology, and a list of at least 5 appropriate academic sources that relate to your research (i.e., academic books, articles from peer-reviewed journals, or chapters in conference proceedings).
- 2) **Final poster presentation** (30%) - You will produce a poster based on your independent research and present it at a poster symposium at the end of term.
- 3) **Peer evaluation** (5%) - You will (anonymously) assess some of your peers' posters using clearly defined criteria.



FACULTY OF SOCIAL SCIENCES EMAIL COMMUNICATION POLICY

Effective September 1, 2010, it is the policy of the Faculty of Social Sciences that all e-mail communication sent from students to instructors (including TAs), and from students to staff, **must** originate from the student's own McMaster University e-mail account. This policy protects confidentiality and confirms the identity of the student. It is the student's responsibility to ensure that communication is sent to the university from a McMaster account. If an instructor becomes aware that a communication has come from an alternate address, the instructor may not reply at his or her discretion.

ACADEMIC DISHONESTY

Academic dishonesty consists of misrepresentation by deception or by other fraudulent means and can result in serious consequences, e.g., the grade of zero on an assignment, loss of credit with a notation on the transcript (notation reads: "Grade of F assigned for academic dishonesty"), and/or suspension or expulsion from the university.

It is your responsibility to understand what constitutes academic dishonesty. For information on the various kinds of academic dishonesty please refer to the Academic Integrity Policy, Appendix 3, www.mcmaster.ca/senate/academic/ac_integrity.htm

The following illustrates only three forms of academic dishonesty:

1. Plagiarism, e.g., the submission of work that is not one's own for which other credit has been obtained.
2. Improper collaboration in group work.
3. Copying or using unauthorized aids in tests and examinations.

POLICY ON MISSED ASSIGNMENTS

If you miss an assignment, written confirmation, approved by your Faculty office, is required in order to make up the marks.

Students are responsible for contacting the instructor.

NEW MSAF POLICY

<http://www.mcmaster.ca/msaf/>

Please note important changes to the McMaster Student Absence Form (MSAF) policy

beginning in the Spring/Summer 2015 term:

- The time frame within which the MSAF is valid has been **reduced from 5 days to 3 days.**
- The upper limit for which an MSAF can be submitted **has been reduced from 'less than 30%' to 'less than 25%' of the course weight.**

If you have any questions about the MSAF, please contact your Associate Dean's office.

If you are absent for reasons other than medical reasons, are missing for more than 3 days, have missed academic work worth more than 25% of the final grade, or exceed one request per term you **MUST** visit your Associate Dean's Office (KTH 129).

You may be required to provide supporting documentation. It is up to the instructor to determine the appropriate relief for missed term work.

MCMASTER GRADING SCHEME

(<http://registrar.mcmaster/calendar/current/pg145.html>)

90-100% A+

85-89% A

80-84% A-

77-79% B+

73-76% B

70-72% B-

67-69% C+

63-66% C

60-62% C-

57-59% D+

53-56% D

50-52% D-

0-49% F

COURSE NOTES

COURSE MODIFICATION

The instructor and university reserve the right to modify elements of the course during the term. The university may change the dates and deadlines for any or all courses in extreme circumstances. If either type of modification becomes necessary, reasonable notice and communication with the students will be given with explanation and the opportunity to comment on changes. It is the responsibility of the student to check their McMaster email and course websites weekly during the term and to note any changes.

COURSE MATERIALS AND AVENUE TO LEARN (A2L)

Lectures will be presented using Power Point, **abbreviated** versions of which will be posted weekly on A2L. Grades will also be posted on A2L. You must be registered in the course to have access to the 4R03 site.

WRITING HELP

McMaster students have free access to an on-line program to help with writing. The user copies and pastes text into the program and receives notification of errors and suggestions for corrections. This program is called **Grammarly**. To register as a user, go to:

<http://www.grammarly.com/edu/> and click on "Sign Up" at the top of the page. You must use your @mcmaster.ca email address to register.

Writing Support Services in the Student Success Centre provides a variety of services to help students improve their writing.

STUDENT BEHAVIOR AND RESPONSIBILITIES

Your learning – it is your responsibility to **keep up with the readings** – do not leave them until the night before the exams. Attendance in this class is **essential** if you want to do well in this course. You are expected to think about the readings and integrate them into the information and concepts presented during lecture.

Classroom behavior – Please **do not be afraid to ask questions** or provide constructive comments! If you do not understand something, or if I have gone over a concept too fast, stop me and ask a question. Chances are if you do not understand something, other people in the class are in the same position.

Please ensure that cell phones are turned off (including text messaging, Twitter, etc...) and **arrive on time for class**. If you have to leave class early, please sit near one of the exits.

Laptop computers may be used in class for taking notes, but students using their computers for any other purpose (e.g., checking Facebook) will be asked to turn their computers off.

